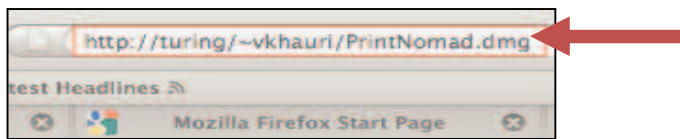


## Wireless Printing For Mac Users

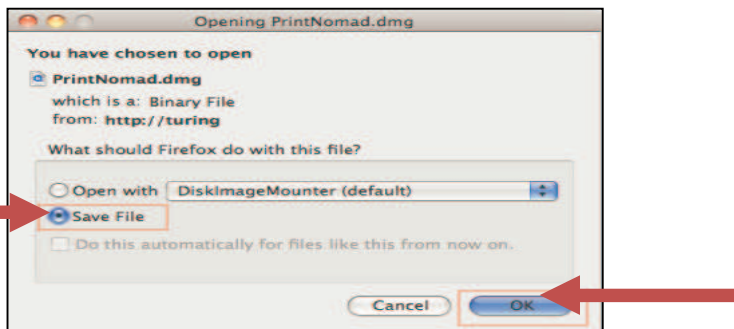
[Nomad](#) enables users to print wirelessly from their laptop computers from many locations around the PSU campus. Follow the instructions below to achieve this.

**Note:** Please keep in mind that this is a pay-2-print option which will deduct automatically from your print quota each time you use this feature.

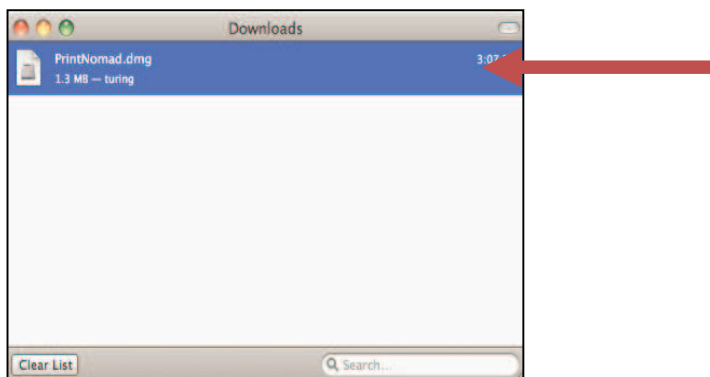
Open your browser (Safari, Firefox, etc), and browse to <http://turing/~vkhauri/PrintNomad.dmg>.



You should see a popup window asking, “What to do with this file?” Select “save” and click “OK”.



The “Downloads” window will open showing the print Nomad application has been downloaded successfully. [Double click on the print Nomad application.](#)

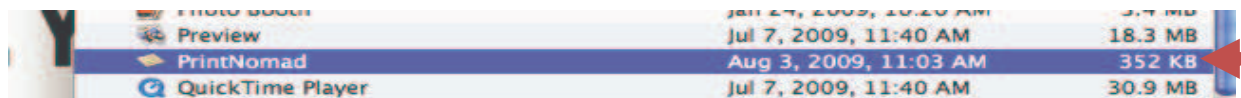


Once the Print Nomad application window is open you will see two selections. The map is the Print Nomad app, the other is the Applications folder for your machine.



If you wish to save the PrintNomad App to your computer simply drag and drop the map to the applications folder as shown.

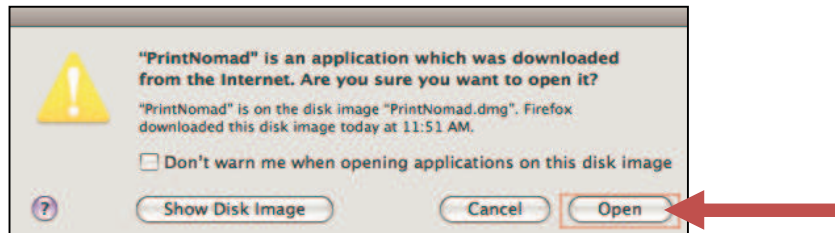
This will save the app to your applications list. So when you want to use it again, you can just select it from your applications folder.



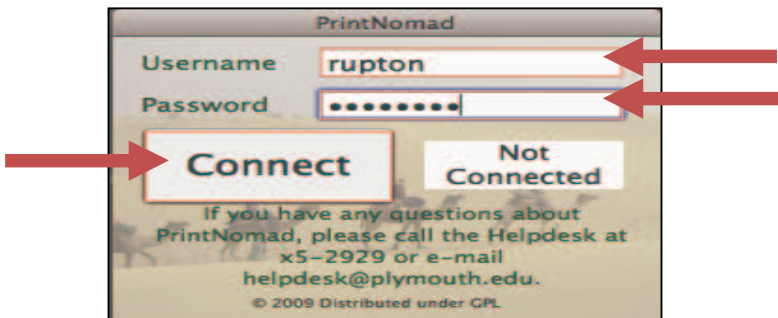
When you are ready to connect to a printer. Click the PrintNomad application (the map).



Once you select the Print Nomad application. You'll receive a pop up like the one below, asking  
If you are sure you want to open it. Here you will select “open”.



Then you will see login screen, here you will enter your MyPlymouth username/password and select the “connect” button.

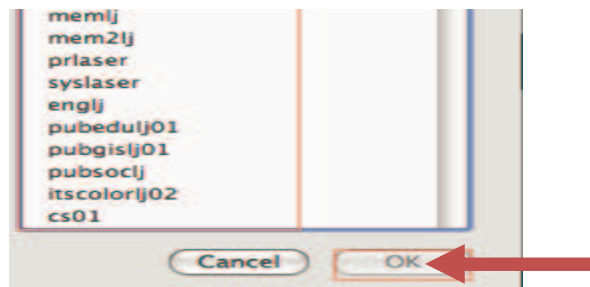
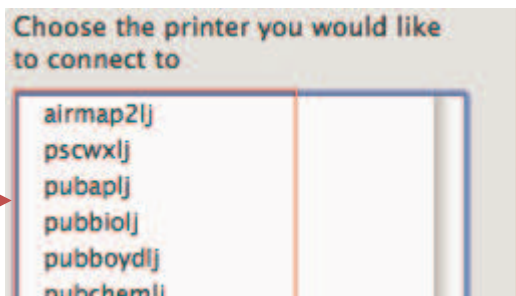


You will next see the “printers” selection window. Simply click on the printer you wish to print wirelessly to and click the “ok” button.

When selecting a printer all of the public access printers have labels physically on them with their “printer name” printed on it.

So if you are not sure what the name of the printer is look at the label.

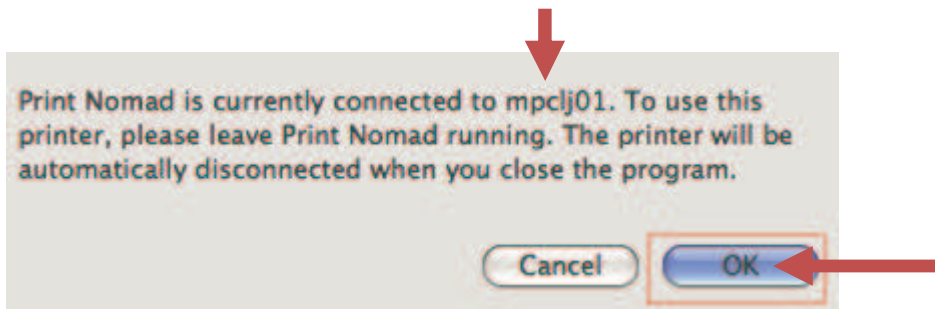
Here is an example of a PSU printer name [itscolorlj01](#).



Once the connection has been established you will see another popup window letting you know Print Nomad is connected to the printer.

Be sure to check the printer's name to insure you have connected to the correct printer.

If this is the correct printer select "ok", and leave Print Nomad open until you wish to disconnect from the printer.



Here are a few Items to double check if the printer installation fails;

- 1.) Make sure the printer name selected from the list of available printers matches the label on the printer.
- 2.) Make sure the printer has a ready status when viewing it from the list of available printers.
- 3.) Make sure the printer is on and has no error messages on the display of the printer.
- 4.) Make sure the printer has paper.

