


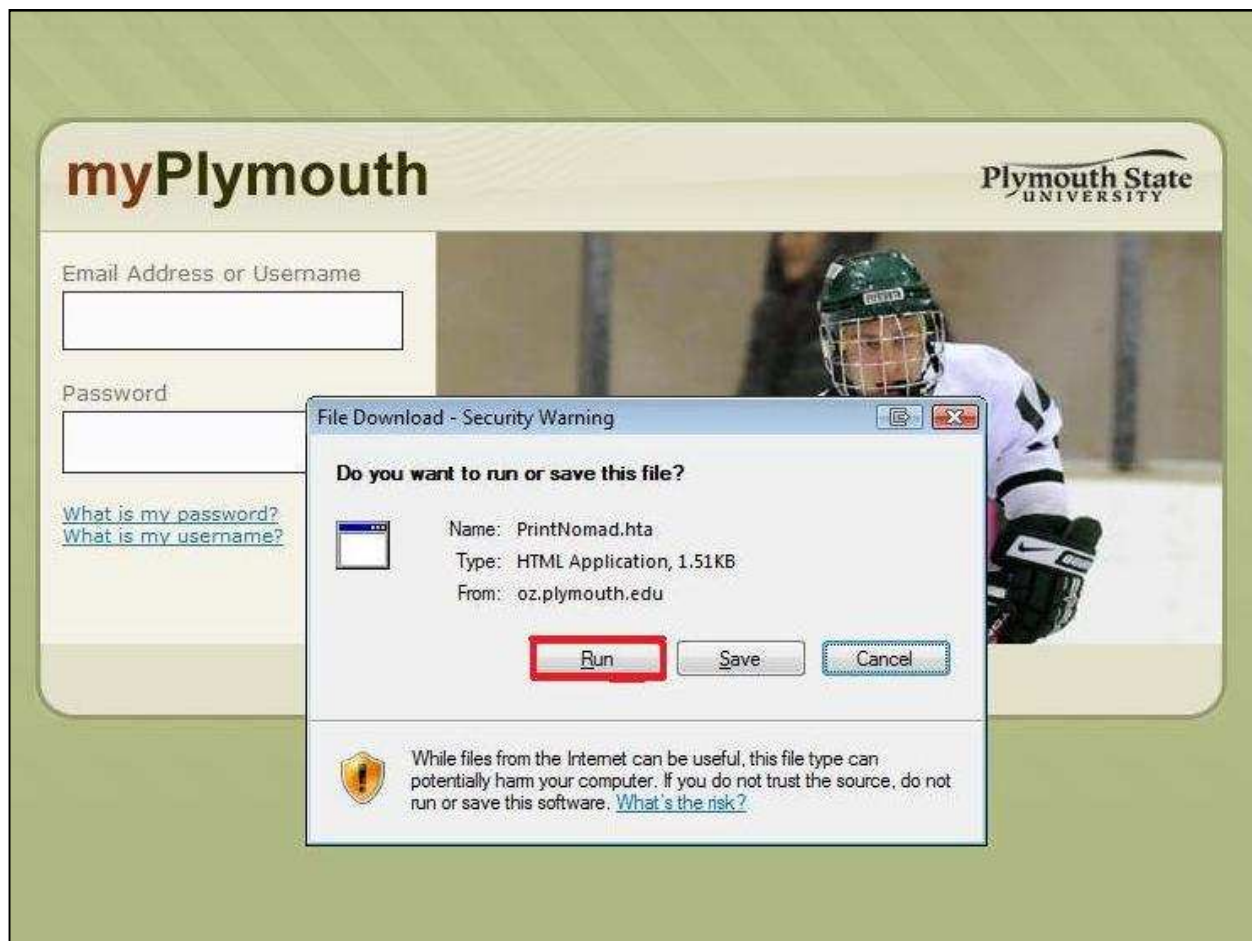
Wireless Printing For Windows

[Nomad](#) enables users to print wirelessly from their laptop computers from many locations around the PSU campus. Follow the instructions below to achieve this.

Note: Please keep in mind that this is a **pay-2-print** option which will deduct automatically from your **print quota** each time you use this feature.

Go to Internet Explorer . In the address bar type in the following http://oz.plymouth.edu/~a_bake/PrintNomad.hta and press enter.

You should see a popup window asking “Do you want to **run** or save this file”
Select **run**.

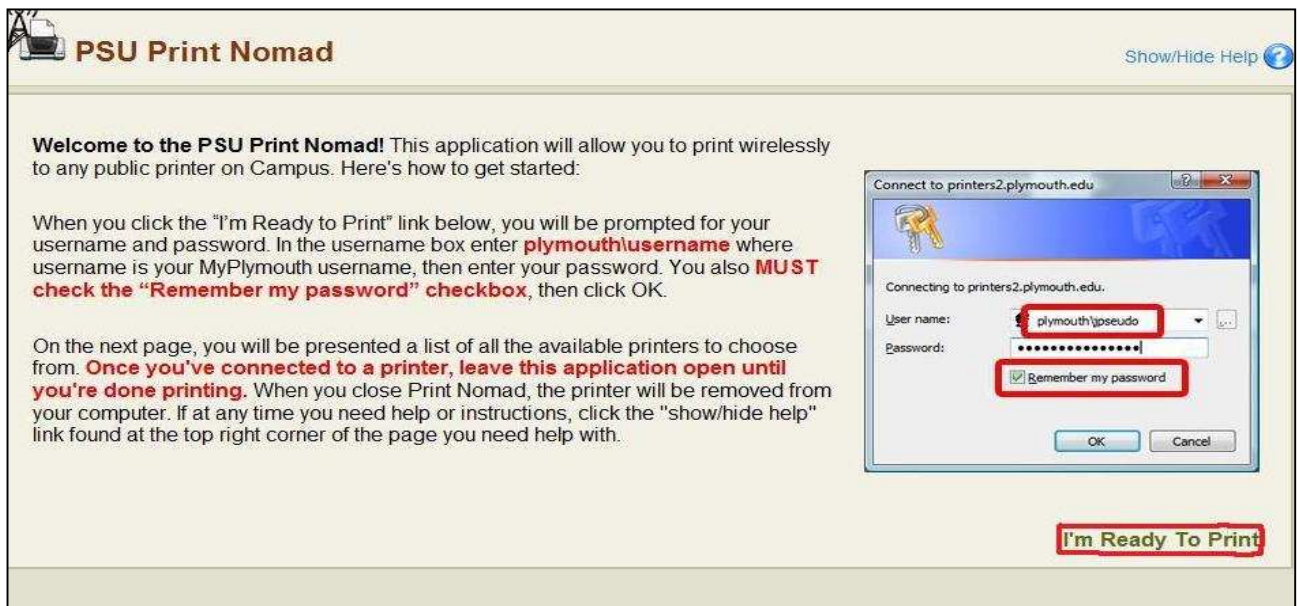


You should see another popup window saying something like “A website wants to open web content using the program on your computer.” Select **allow**.



The next screen you should see is the “I’m Ready to Print” screen. Here you will see details on what this application is, and how to use it.

Enter your PSU username and password. Don’t forget to place **Plymouth** in front of your username and check “remember password”.



On the next page, you will be presented with a list of all the available printers to choose from.

If at any time you need help or instructions, click the [Show/Hide Help ?](#) link found at the top right corner of the page.

PSU Print Nomad [Show/Hide Help ?](#)

Instructions:
 Below is a list of all public printers on campus. You can find a printer by name, matching it to a label on the printer, or find your current location in the location field next to each printer in the list.
 When you've found the right printer, click on the name of the printer to connect to it. You will then be asked if you want to connect to the printer. Click Yes. Please note that **printing to these printers will affect your print quota**, and you must have quota available.

Errors:
 If a printer has a large number of jobs in the queue, or if it has an error in the status column, you probably do not want to print to that printer until the issue has been resolved. If this is the case, check that the printer is on, that there are no error messages on the display of the printer, and that it has paper. If these steps do not resolve the problem, please use another printer, and/or call the Helpdesk at the Lamson Learning Commons at X52929 (535-2929 from your cell phone).

Name	Status	Location	Jobs	Model
airmap2lj	Ready	Boyd 3rd Floor Meteorology - Map Room	0	Xerox Phaser 8550DP PS
buslj	Ready	Hyde 113 Business Cluster	0	HP LaserJet P4010_P4510 Series PCL 6
dnmlj	Ready	D&M 419 HPER Cluster	0	HP LaserJet 4300 PCL 5
englj	Ready	Rounds 204 English Cluster	0	HP LaserJet 4300 PCL 5
graphicslj	Ready	D&M 220 Graphic Design Lab	0	HP LaserJet 4050 Series PCL 5
hublj	Ready	HUB 029 Cluster	0	HP LaserJet P4010_P4510 Series PCL 6

You can see the printer name, status, and location.

Name	Status	Location
airmap2lj	Ready	Boyd 3rd Floor Meteorology - M
buslj	Ready	Hyde 113 Business Cluster
dnmlj	Printer Offline	D&M 419 HPER Cluster
englj	Ready	Rounds 204 English Cluster

You can also view the number of print jobs and model.

Jobs	Model
0	Xerox Phaser 8550DP PS
0	HP LaserJet P4010_P4510 Series PCL 6
0	HP LaserJet 4300 PCL 5
0	HP LaserJet 4300 PCL 5
0	HP LaserJet 4050 Series PCL 5
0	HP LaserJet P4010_P4510 Series PCL 6
0	Xerox Phaser 8860MFP PS
0	Xerox Phaser 8860MFP PS
0	HP LaserJet 4300 PCL 5
0	HP LaserJet P4010_P4510 Series PCL 6

When selecting a printer all of the public access printers have labels physically on them with their “[printer name](#)” printed on it.

So if you are not sure what the name of the printer is look at the label.

Here is an example of a PSU printer name [itscolorlj01](#).

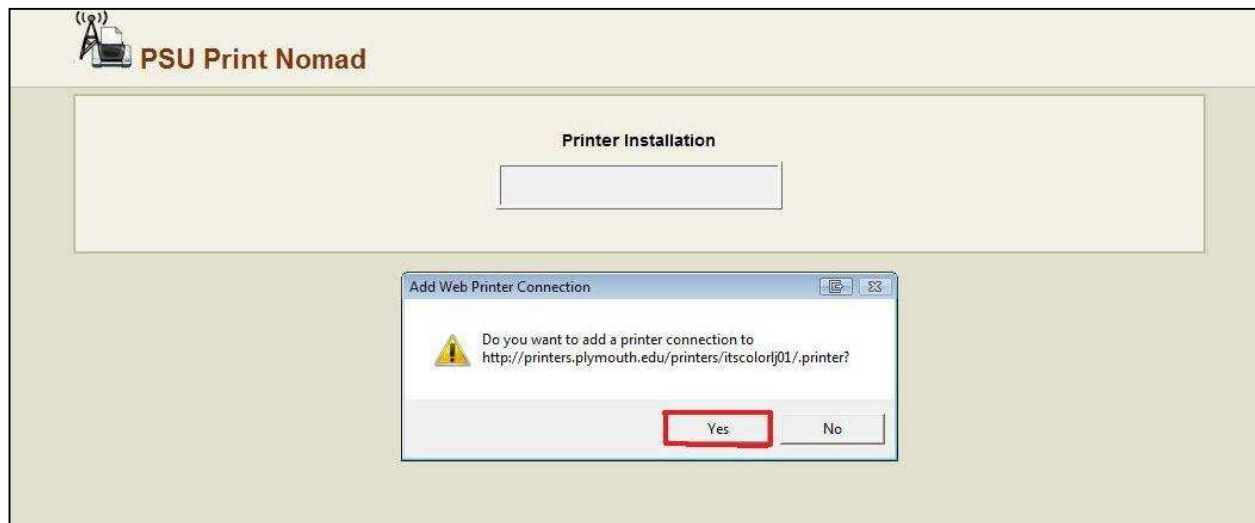
Once you have found the printer’s name locate it on the list of available printers. After you have located it on the list simply select it by clicking on its name.

Then you will be brought to the printer installation screen.

A popup window will appear asking you “**Do you want to add a printer connection to** <http://printers.plymouth.edu/printers/itscolorlj01/.printer>” notice where the printers name is located.

You may want to double check this to make sure you are connecting to the correct printer.

If it is the correct printer select yes to confirm the connection.



At this point wait for your computer to establish the connection and install the printer.

You should see a progress bar like the one in the screen shot below showing the connection is being established.



Once the connection has been established you should get a confirmation screen like the one below.

This will state whether the connection has successfully been established, and will provide a link to the printer's folder on your machine.

Notice on the screen in red it states the following “**Leave this window open as long as you wish to print to this printer. When you close this window, the printer will be deleted.**”

So, be sure to leave the window open until you have finished printing otherwise you will be disconnected from the printer and will have to start the process from the top to resume printing wirelessly.



If the installation isn't successful you'll receive a different screen like the one below. Stating printer installation failed.



Here are a few Items to double check if the printer installation fails;

- 1.) Make sure the printer name selected from the list of available printers matches the label on the printer.
- 2.) Make sure the printer has a ready status when viewing it from the list of available printers.
- 3.) Make sure the printer is on and has no error messages on the display of the printer.
- 4.) Make sure the printer has paper.